



**WARNING**  
The current position and use of this chart are subject to change without notice. For the latest information, refer to the U.S. Coast and Geodetic Survey Notice to Mariners.

**NOAA MAPS AND CHARTS**  
The National Oceanic and Atmospheric Administration is the official U.S. Government authority for the production and distribution of nautical charts and publications. For more information, contact the National Oceanic and Atmospheric Administration, 1215 Jefferson Davis Highway, Alexandria, VA 22304.

**NOTE 1**  
Boundaries of the Exclusive Economic Zone (EEZ) are shown by a solid line. The EEZ extends 200 nautical miles from the baseline. The EEZ is subject to the provisions of the United Nations Convention on the Law of the Sea (UNCLOS).

**NOTE 2**  
The Hawaiian Islands are shown in yellow. The rest of the world is shown in white. The map is a Mercator projection.

**NOTE 3**  
The map is a Mercator projection. The scale is 1:100,000. The map is based on the North American Datum of 1983 (NAD 83).

**NOTE 4**  
The map is a Mercator projection. The scale is 1:100,000. The map is based on the North American Datum of 1983 (NAD 83).

**NOTE 5**  
The map is a Mercator projection. The scale is 1:100,000. The map is based on the North American Datum of 1983 (NAD 83).

**NOTE 6**  
The map is a Mercator projection. The scale is 1:100,000. The map is based on the North American Datum of 1983 (NAD 83).

**NOTE 7**  
The map is a Mercator projection. The scale is 1:100,000. The map is based on the North American Datum of 1983 (NAD 83).

**NOTE 8**  
The map is a Mercator projection. The scale is 1:100,000. The map is based on the North American Datum of 1983 (NAD 83).

**NOTE 9**  
The map is a Mercator projection. The scale is 1:100,000. The map is based on the North American Datum of 1983 (NAD 83).

**NOTE 10**  
The map is a Mercator projection. The scale is 1:100,000. The map is based on the North American Datum of 1983 (NAD 83).

**UNITED STATES  
HAWAII  
HAWAIIAN ISLANDS**

Metric Projection  
Scale 1:100,000 at Lat. 20°N  
North American Datum of 1983  
SOUNDINGS IN FATHOMS  
AT MEAN LOWER LOW WATER

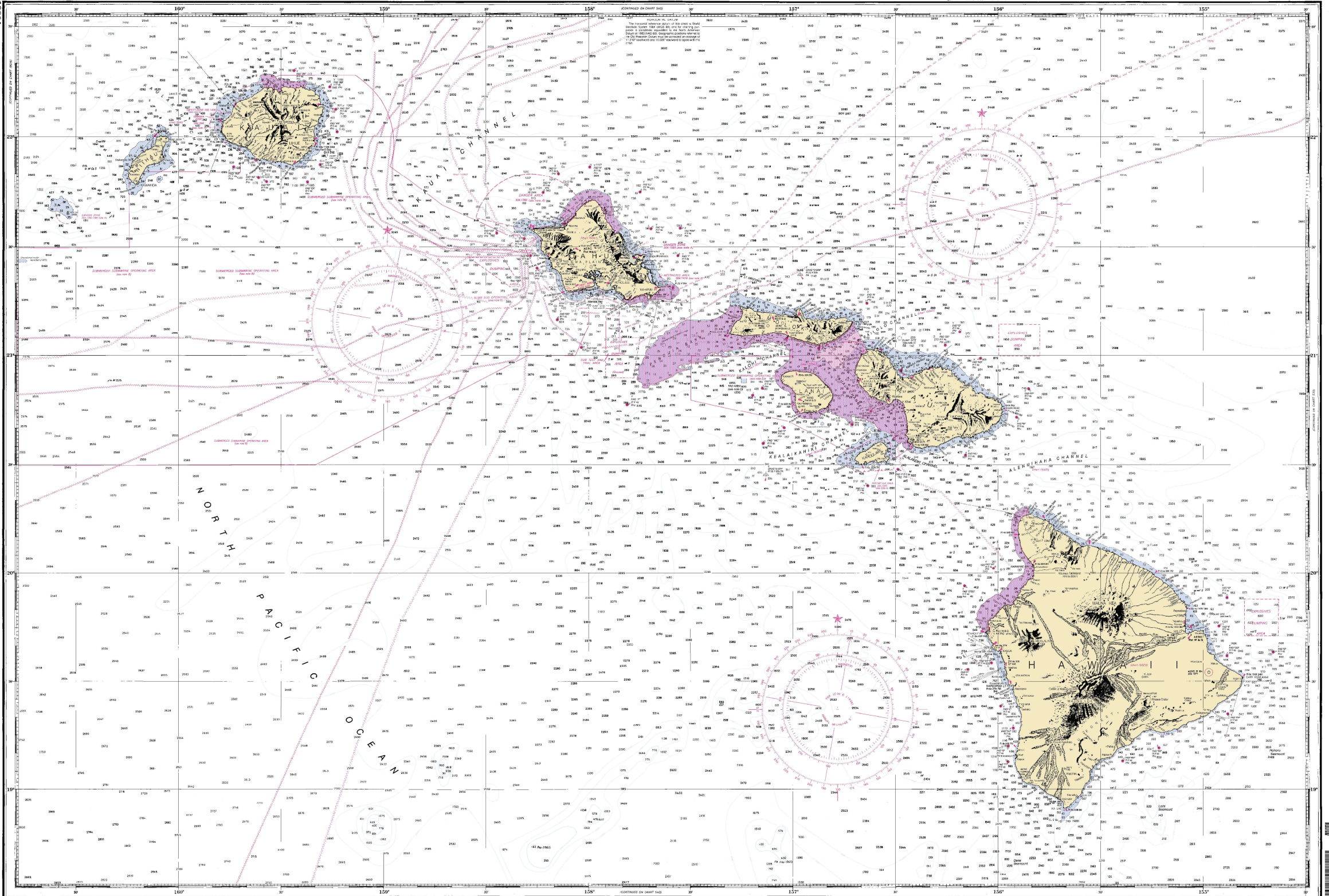
**ABBREVIATIONS**  
A: Aerial  
B: Buoy  
C: Cable  
D: Depth  
E: Elevation  
F: Fathoms  
G: Gale  
H: Height  
I: Ice  
J: Jetty  
K: Light  
L: Lighted  
M: Mound  
N: Natural  
O: Obstruction  
P: Pier  
R: Reef  
S: Shoal  
T: Tower  
U: Uncharted  
V: Vessel  
W: Wharf  
X: Unknown  
Y: Yacht  
Z: Zebra

**NOTE 11**  
The map is a Mercator projection. The scale is 1:100,000. The map is based on the North American Datum of 1983 (NAD 83).

**NOTE 12**  
The map is a Mercator projection. The scale is 1:100,000. The map is based on the North American Datum of 1983 (NAD 83).

**NOTE 13**  
The map is a Mercator projection. The scale is 1:100,000. The map is based on the North American Datum of 1983 (NAD 83).

**NOTE 14**  
The map is a Mercator projection. The scale is 1:100,000. The map is based on the North American Datum of 1983 (NAD 83).



**NOTE 15**  
The map is a Mercator projection. The scale is 1:100,000. The map is based on the North American Datum of 1983 (NAD 83).

**NOTE 16**  
The map is a Mercator projection. The scale is 1:100,000. The map is based on the North American Datum of 1983 (NAD 83).

**NOTE 17**  
The map is a Mercator projection. The scale is 1:100,000. The map is based on the North American Datum of 1983 (NAD 83).

**NOTE 18**  
The map is a Mercator projection. The scale is 1:100,000. The map is based on the North American Datum of 1983 (NAD 83).

**NOTE 19**  
The map is a Mercator projection. The scale is 1:100,000. The map is based on the North American Datum of 1983 (NAD 83).

**NOTE 20**  
The map is a Mercator projection. The scale is 1:100,000. The map is based on the North American Datum of 1983 (NAD 83).

Published by the U.S. Coast and Geodetic Survey, U.S. Department of Commerce, National Oceanic and Atmospheric Administration, Washington, D.C. 20541.

**NOTE 21**  
The map is a Mercator projection. The scale is 1:100,000. The map is based on the North American Datum of 1983 (NAD 83).

**NOTE 22**  
The map is a Mercator projection. The scale is 1:100,000. The map is based on the North American Datum of 1983 (NAD 83).

**NOTE 23**  
The map is a Mercator projection. The scale is 1:100,000. The map is based on the North American Datum of 1983 (NAD 83).